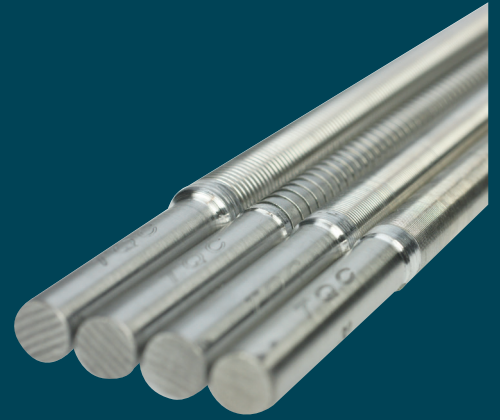


Spiral Bar Coater

AB3050



Product Description

Stainless steel Spiral applicators, with a film width of 180, 230 or 320 mm, are round bars, tightly wound with stainless steel wire.

The diameter of the wire, in the wound form, regulates the thickness of the coating. The Spiral applicator is ideal for application of (thin) film of thin materials such as sheet of paper or plastic. Also to be used with automatic film applicators.

This type of spiral bar coater fits on the TQC / TQC Sheen Automatic Film Applicator Models, sold from 2012 and on. If you have an older model TQC Automatic Film Applicator, another type of spiral film applicator (starting with article code VF...) has to be used. Please contact us for availability.

Business

Paint laboratory

Standards

Look up the appropriate standard for a correct execution of the test.

Feature

Easy to operate 4-way directional push button, graphical representations, storage of data in multiple batches and survey reports in Microsoft Excel®.

Scope of supply

The Spiral Bar coater comes in a tube-type case.

Specifications

Material	Stainless steel
Available in	sizes from 4 to 300 µm
Straightness	< 50 µm

Use

The DC9000 Hull Roughness Gauge has a menu-driven interface. Check the manual for full details.

Special care

- Though robust in design, this instrument is precision-machined. Never drop it or knock it over
- Always clean the instrument after use.
- Only use non-corrosive solvents to clean the instrument. Use a soft, non-abrasive cloth to dry it.
- Never clean the instrument by any mechanical means such as a wire brush or abrasive paper. This may cause, just like the use of aggressive cleaning agents, permanent damage.
- When stored for a long period of time, wrap the instrument in oil paper

Ordering information

Film thickness	Film width		
	180mm	230mm	320mm
0 µm	SH0632	AB3742	AB3070
4 µm	SH0168	SB3720	AB3050
6 µm	SH0232	AB3721	AB3051
8 µm	SH0262	AB3722	AB3052
10 µm	SH0631	AB3723	AB3053
12 µm	SH0676	AB3724	AB3054
14 µm	SH0700	AB3725	AB3055
16 µm	SH0728	AB3726	AB3056
18 µm	SH0751	AB3743	AB3082
20 µm	SH0799	AB3727	AB3057
24 µm	SH0856	AB3728	AB3058
26 µm	SH0897	AB3744	AB3083
28 µm	SH0921	AB3745	AB3084

Film thickness	Film width		
	180mm	230mm	320mm
30 µm	SH0941	AB3729	AB3059
32 µm	SH0965	AB3746	AB3085
34 µm	SH0978	AB3730	AB3060
36 µm	SH0994	AB3747	AB3086
38 µm	SH1018	AB3731	AB3061
40 µm	SH1042	AB3732	AB3062
46 µm	SH1091	AB3748	AB3087
48 µm	SH8007	AB3749	AB3088
50 µm	SH1144	AB3733	AB3063
56 µm	SH1216	AB3734	AB3064
60 µm	SH1231	AB3735	AB3065
66 µm	SH1266	AB3750	AB3089
70 µm	SH1280	AB3751	AB3094
76 µm	SH1314	AB3736	AB3066
80 µm	SH1341	AB3752	AB3095
88 µm	SH1372	AB3753	AB3096
100 µm	SH0326	AB3736	AB3067
120 µm	SH0797	AB3738	AB3068
128 µm	SH0919	AB3754	AB3097
150 µm	SH1686	AB3739	AB3072
200 µm	SH0329	AB3740	AB3069
300 µm	SH0338	AB3755	AB3099
Custom	SH2005	AB3741	AB3071



Accessories

VF1601	Application Table 380 x 230 mm
VF1602	Application Table 230 x 160 mm
VF2343	Test charts A6, White/Black B+, with optical brightner, 250pcs
VF2344	Test charts A5, White/Black B+, with optical brightner, 250pcs
VF2345	Test charts A4, White/Black B+, with optical brightner, 250pcs
VF2346	Test charts A5, Black/White chequered B+, with optical brightner, 250pcs
VF2347	Test charts A4, Black/White chequered B+, with optical brightner, 250pcs
VF2354	Test charts A3, Black/White chequered B+, with optical brightner, 250pcs
VF2317	Test charts A6, White/Black B-, without optical brightner, 250pcs
VF2319	Test charts A5, White/Black B-, without optical brightner, 250pcs
VF2321	Test charts A4, White/Black B-, without optical brightner, 250pcs
VF2323	Test charts A5, Black/White chequered B-, without optical brightner, 250pcs
VF2325	Test charts A4, Black/White chequered B-, without optical brightner, 250pcs

TQC Sheen - Spiral Bar Coater

web. www.industrialphysics.com

email. info-ic@industrialphysics.com

Phone +31 (0)10 7900 100

Disclaimer:

The information given in this sheet is not intended to be exhaustive and any person using the product for any purpose other than that specifically recommended in this sheet without first obtaining written confirmation from us as to the suitability of the product for the intended purpose does so at his own risk. Whilst we endeavour to ensure that all advice we give about the product (whether in this sheet or otherwise) is correct we have no control over either the quality or condition of the product or the many factors affecting the use and application of the product. Therefore, unless we specifically agree in writing to do so, we do not accept any liability whatsoever or howsoever arising for the performance of the product or for any loss or damage (other than death or personal injury resulting from our negligence) arising out of the use of the product. The information contained in this sheet is liable to modification from time to time in the light of experience and our policy of continuous product development.